



DATASCAN MK II

An unsophisticated ground penetrating radar system that allows the user to view structural features, such as; wire mesh, rebar, pipes (metal and fluid filled P.V.C.), asphalt, and concrete thickness.

Features and Benefits

- Creates images automatically allowing the user to evaluate data in the field.
- Unsophisticated operation rapidly allows the user to gather information.
- Displays both a cross section of the material under test and each individual scan.
- Maps and stores the location of the features for later reference with the optional P.C. Software.

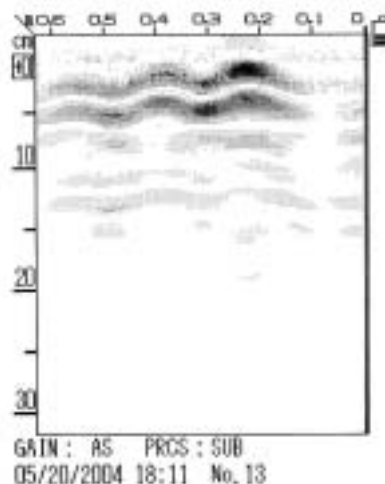
DATASCAN MK II



The Datascan MK II represents the latest technological developments in object location within construction materials. Using the latest ground penetrating radar technology coupled with the latest developments in micro processing we are able to visually display a cross-section of the material under test and what lies within it.

By simply rolling the unit across the surface of the concrete a variety of features inside the material can be found. Rebar from 5 mm (1/4") to 200 mm (8") depth can be located as well as pipe, wire, mesh, fluid filled P.V.C. and more...The Unit can store up to 16 meters of information. It can also measure asphalt and concrete thickness. Post processing algorithms within the unit allows these features to be graphically displayed in real-time on the built in LCD.

Visual analysis of the information can be done in three ways. The A-Scan mode which can be viewed on the LCD screen, can show the user relative signal strength as a function of time. The B-Scan mode, also available on the LCD screen, can show the user a cross-section of the material being tested and the features inside. Both of these displays can be printed in the field with the printer option. Finally in the advanced system with the accompanying windows compatible personal computer software a C-Scan mode is also available. This allows the user to display a map of the area under test and the appropriate features inside it.



Example of field print out showing three bars of different diameters and different depths.

Specifications

Dimensions: 52 mm (6") x 150 mm (5.8") x 216 mm (8.5")

Weight: 2.5 lbs.

Display Type: LCB, B & W with back light

Battery Life: 2 hours

Range of Penetration: 5 mm (1/4") to 200 mm (8")

LCD size: 60 mm (2 3/8") x 80 mm (3 1/4")

Operating Frequency: 400 mHz

Sales Numbers

R-G-1000	Basic System
R-G-1200	Complete System
R-G-1300	Computer Software
R-G-1400	Printer
R-075-11223-001	Batteries
R-075-11224-001	Battery Charger

NDT JAMES INSTRUMENTS INC.
NON DESTRUCTIVE TESTING SYSTEMS

3727 North Kedzie Avenue,
Chicago, Illinois 60618
1-800-426-6500 (773) 463-6566
FAX (773) 463-0009
e-mail: info@ndtjames.com
http://www.ndtjames.com

NDT JAMES INSTRUMENTS INC.

www.ndtjames.com